



# STOP THE SPREAD



**PLEASE USE HAND SANITIZER BOTH GOING INTO AND GOING OUT OF THE CHURCH**

Supplies of hand sanitizer are available.



**MAINTAIN PHYSICAL DISTANCING**

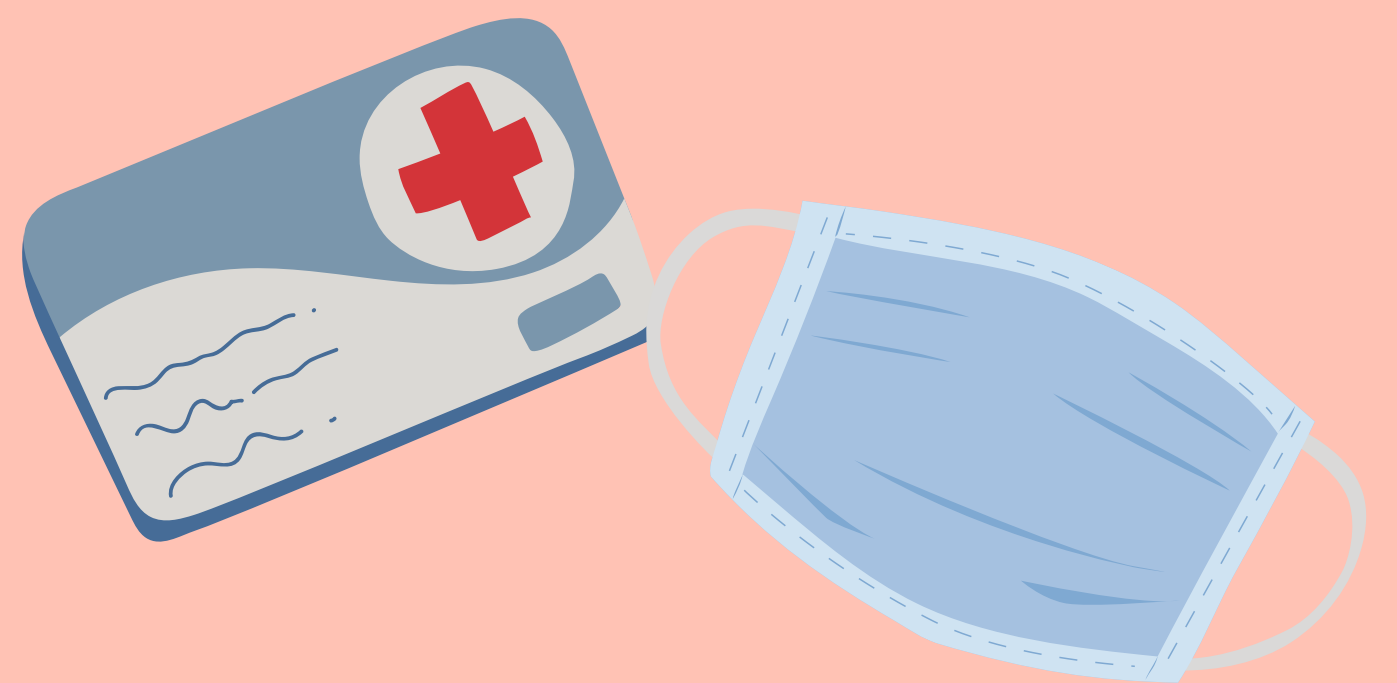
Maintain at least 2 metres (6 feet) distance between yourself and anyone else and sit in the marked places only.



**AVOID TOUCHING EYES, NOSE AND MOUTH**

Hands touch many surfaces and can pick up viruses.

Once contaminated, hands can transfer the virus to your eyes, nose or mouth.



**IF YOU HAVE A FEVER, COUGH OR DIFFICULTY BREATHING, PLEASE DO NOT ENTER THE CHURCH.**

Stay home if you feel unwell. If you have a fever, cough and difficulty breathing, seek medical attention if necessary.